



RATCH-Australia Corporation

# Collector Wind Farm Development

[www.windfarms.net.au](http://www.windfarms.net.au)



# Collector Wind Farm Development An Update

Since the previous Community Open House held in March 2011, there have been a number of developments on the Collector Wind Farm proposal.

## A new owner

In July 2011, the Collector Wind Farm development was sold by Transfield Services to RATCH Australia Corporation Limited (RAC). RAC is an unlisted company owned 80% by Ratchaburi Electricity Generating Holding PCL, a leading Thai-based power generation company, and 20% by Transfield Services. RAC owns three operating wind farms in Australia and a portfolio of wind farm development projects. The Transfield Services development team has transferred employment to RAC, so the people that you have been dealing with in relation to the Collector Wind Farm to date will remain the same.

## Review of the Environment Assessment Report

The Draft Environment Assessment Report (EAR) was submitted to the Department of Planning and Infrastructure (DoPI) for review in March 2011 and assessed against the Director-General's Requirements. The EAR was also provided to the NSW Office of Environment and Heritage (OEH) for review of ecological and heritage matters. Following this review OEH required RAC to undertake additional ecological investigations. Over the past several months RAC has been working closely with OEH to:

- microsite turbines to avoid impacts on significant vegetation;
- establish a vegetation offset area to compensate for vegetation removed during the construction phase; and
- undertake site surveys for two threatened lizard species: the Striped Legless Lizard and Pink-tailed Worm Lizard.

We have been successful in securing a vegetation offset area within the development envelope, which will allow us to secure 10 times as much vegetation as we need to clear. This vegetation offset will be maintained in perpetuity.

## Reducing potential noise impacts

The revised wind farm layout complies with the baseline limit under the South Australian Environment Protection Authority's (SA EPA) Wind Farms Environmental Noise Guidelines (2009). The Guidelines represent industry best practice, are some of the toughest in the world, and have been adopted by DoPI for wind farm developments in NSW.

The baseline noise level under the Guidelines is 35 decibels (dB(A)). This limit has been established by the SA EPA specifically for localities which are primarily intended for rural living. The results of the noise assessment show that this limit will be met at all non-involved residences under the highest noise emission conditions for the turbines.

# Your say...

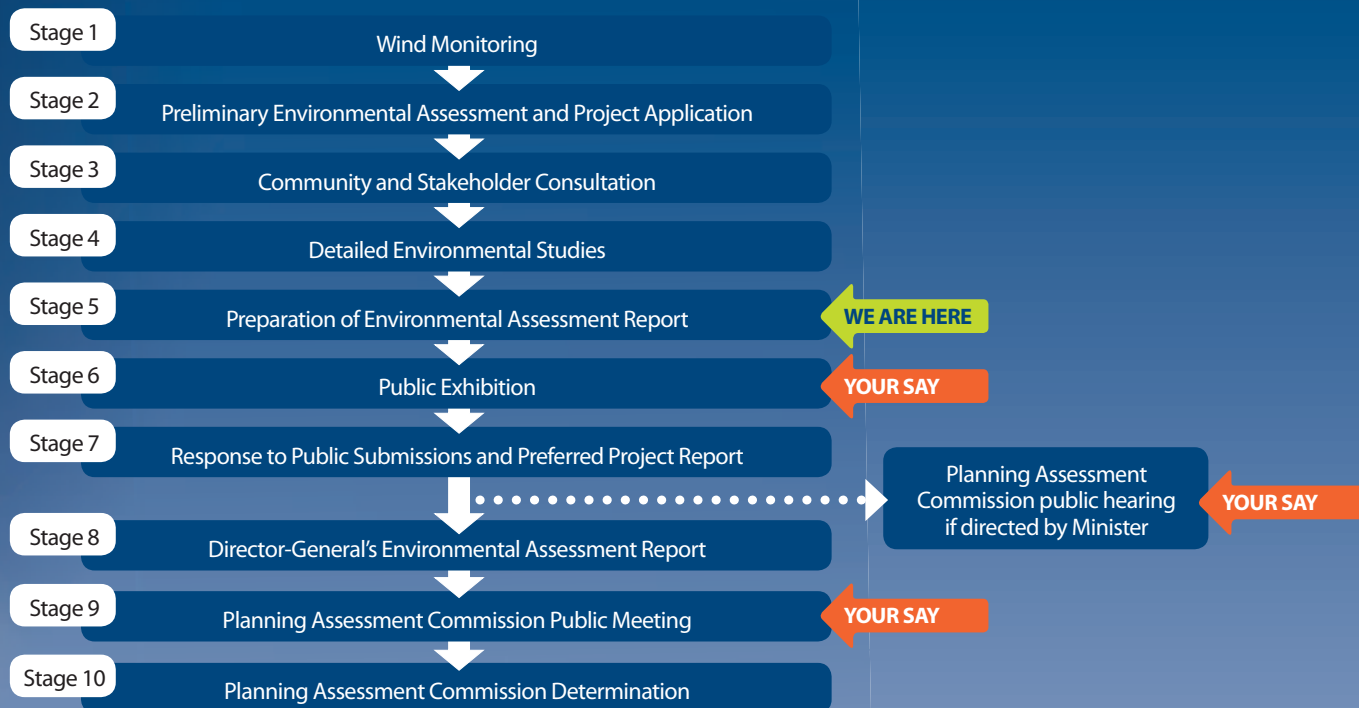
## The Approval Process

The Collector Wind Farm is being assessed under Part 3A of the *Environmental Planning and Assessment Act 1979*.

During the next phase of the approval process, there will be a number of opportunities for members of the community to make formal submissions

about the proposed development to the Department of Planning and Infrastructure (DoPI).

The remaining approval process is expected to take at least 12 months, and if approval is granted it is likely to be at least 2 years before construction commences. The following flowchart summarises the planning process and highlights the opportunities for public comment.



The draft Environmental Assessment Report (EAR) for the Collector Wind Farm development is currently being revised to address comments received from DoPI and the Office of Environment and Heritage (OEH). The community feedback gained through the Open House and one-on-one consultation will be included in the final draft EAR prior to resubmission to DoPI for review.

## Public Exhibition

Once DoPI and other government agencies are satisfied that the EAR adequately addresses the Director-General's Requirements, it will be placed on public exhibition. During the public exhibition period any person may make a submission to the Director-General of DoPI regarding the project. While the exhibition period will be a minimum of 30 days, RAC will be recommending to DoPI that this period be extended to 60 days to allow every opportunity for public comment.

We will advise the community in advance of the exhibition period commencing and the EAR will be made available as follows:

- in hard copy at several public locations, including the DoPI Head Office in Sydney, Upper Lachlan Shire Council offices, Goulburn Mulwaree Council offices and Gunning Library;
- on the DoPI website;
- on the RAC wind farms website – [www.windfarms.net.au](http://www.windfarms.net.au)
- on CD-ROM by request.

## Planning Assessment Commission

The Planning Assessment Commission (PAC) provides the Minister for Planning and Infrastructure with the option to refer developments to an external panel of decision makers to determine whether to approve the development. The PAC is independent and is not subject to the direction or control of the Minister.

The Minister has delegated decisions on remaining Part 3A projects to the PAC. The PAC will determine whether to approve the Collector Wind Farm, or otherwise. Under this process the PAC may hold a public meeting or a public hearing, which will allow people interested in the proposed development to address the Commission. This provides an opportunity for members of the community to present their opinions directly to the independent decision-maker.

## Where can I get further information?

The RATCH Project Team is available for consultation throughout the remainder of the approval period. Please contact either Nick Valentine or Anthony Yeates should you wish to discuss any matter related to the project:

### Nick Valentine

Project Director, APP Corporation

Email: [nick.valentine@app.com.au](mailto:nick.valentine@app.com.au) Phone: 02 9963 9924

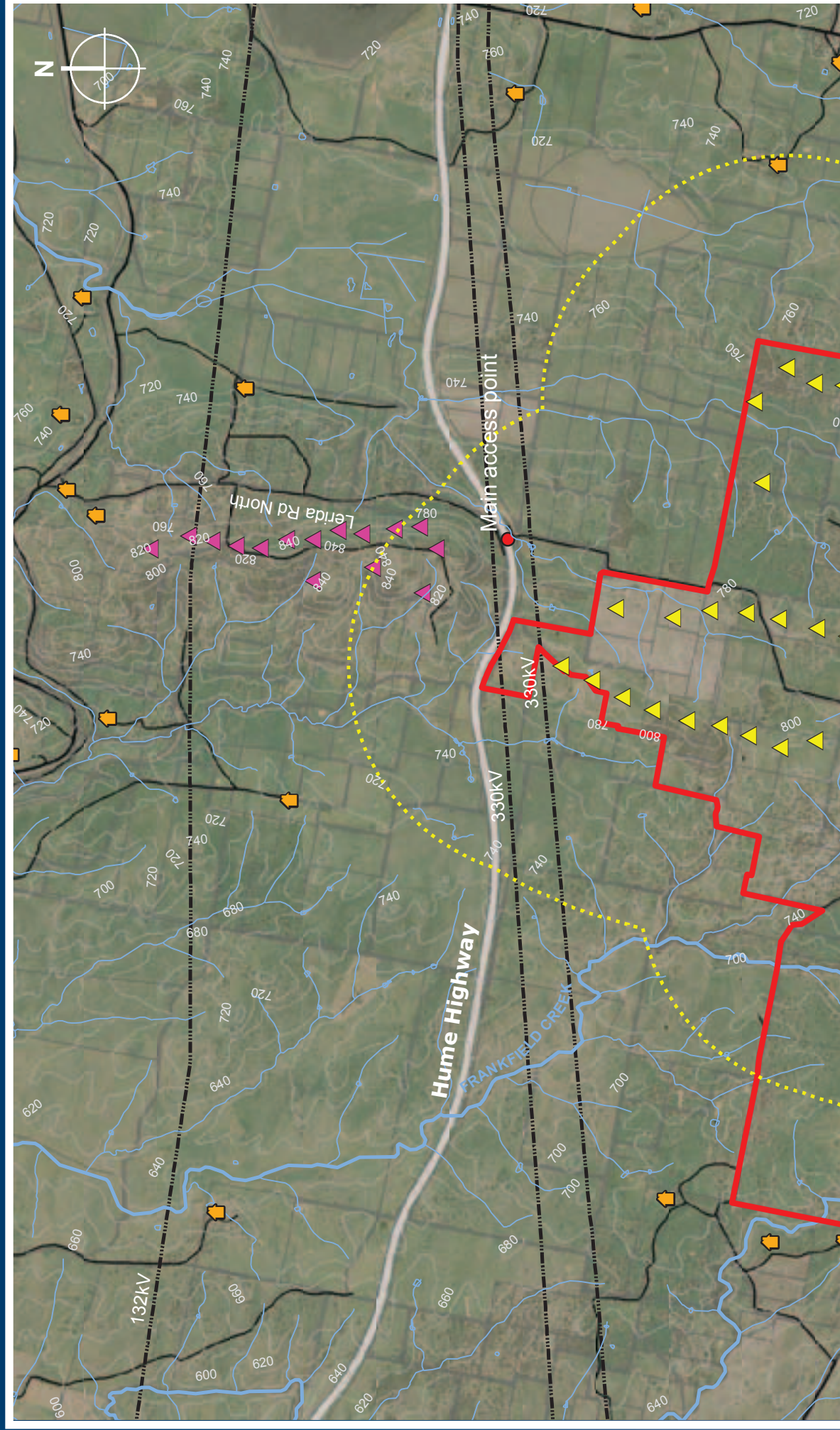
### Anthony Yeates

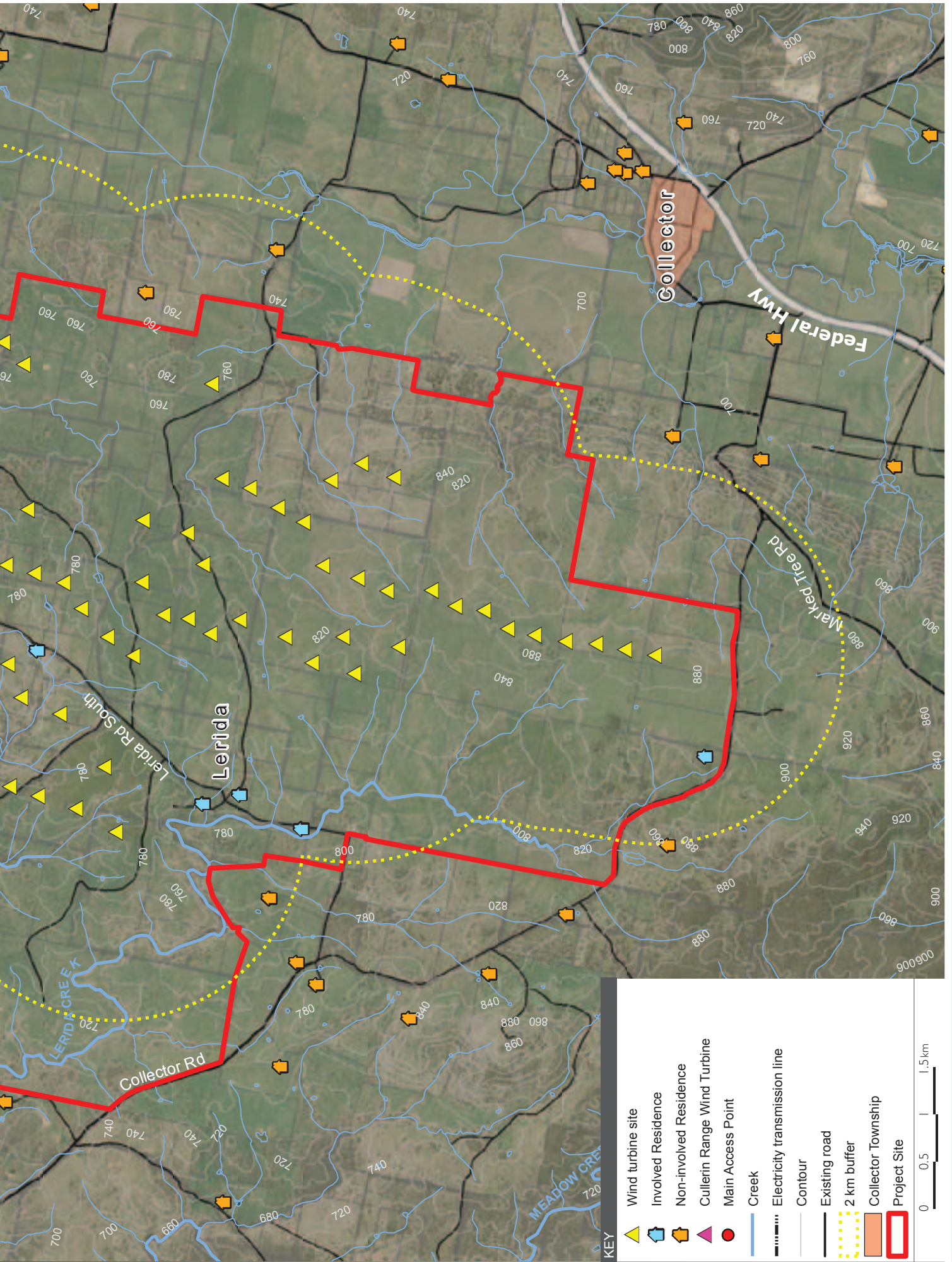
Development Manager, RATCH Australia Corporation Limited

Email: [Anthony.Yeates@ratchaustralia.com](mailto:Anthony.Yeates@ratchaustralia.com) Phone: 02 9464 1382

# Collector Wind Farm Development – Updated Layout

The map below shows the revised wind turbine layout for the Collector Wind Farm. A number of changes have been made to the layout since it was originally presented in October 2010. The number of turbines has been reduced from 80 to 69 to reduce visual and noise impacts, and to avoid potential telecommunications interference. A number of turbines have been also been moved slightly to minimise the need for vegetation clearance.





**KEY**

- ▲ Wind turbine site
- ◻ Involved Residence
- ◻ Non-involved Residence
- ▲ Cullerín Range Wind Turbine
- Main Access Point
- Creek
- - - Electricity transmission line
- Contour
- Existing road
- ⋯ 2 km buffer
- Collector Township
- Project Site

0    0.5    1    1.5 km

# Collector Wind Farm Development The Facts

**Owner committed to the community, long term** – RATCH Australia Corporation (RAC) is different from many wind farm developers as it is also a long-term owner. We want to work with the local community during both the development and operating phases of the wind farm. RAC owns and operates three wind farms in Australia and is currently working on a portfolio of wind farm developments located around the country.

**Community consultation** – RAC is eager to ensure that you are fully informed about the Collector Wind Farm, are actively engaged on your issues of concern and have an opportunity to ask questions and provide views on the proposal. Wherever possible, we will incorporate your feedback into the design of the project and into our Environmental Assessment Report before it is resubmitted to DoPI.

**Clean, green energy** – the Collector Wind Farm has the capacity to generate enough renewable energy to power 80,000 NSW homes and save an estimated 500,000 tonnes of greenhouse gas emissions per annum.

**Benefits for the Collector area** – the Collector Wind Farm is expected to provide over 100 jobs during construction and at least 10 full-time positions during operation. RAC encourages its contractors to source goods and services from the local area and there is the potential for apprenticeships and other industry training. The wind farm will stimulate local businesses and provide a direct economic contribution of approximately \$180,000 per annum to the Collector community.

**Wind turbines are safe** – Infrasound or low frequency noise generated by wind turbines is the same as natural sources such as wind and rivers, or from road traffic. There is no peer-reviewed, scientific evidence to link wind turbines to adverse health effects.

**Ecological offsets** – the Collector Wind Farm will conserve 10 times the area of vegetation cleared for the proposal.

**Noise** – the wind farm layout has been designed to comply with the South Australian Environment Protection Authority's (SA EPA) Wind Farms Environmental Noise Guidelines (2009). These guidelines represent industry best practice, are some of the toughest in the world, and have been adopted by DoPI for wind farm developments in NSW.

**Wind turbines do not pose a significant fire risk** – The fire risk is very low, and there will be a fire management plan developed with the local fire authorities.

**Committed to rehabilitating the land** – Our commitment to decommission the turbines once they have reached the end of their useful life will be documented in our land lease arrangements and will be a condition of our consent from DoPI if the project is approved. Host landowners will not be responsible for removing the wind turbines.





### **Where can I get further information?**

The RATCH Project Team is available for consultation throughout the remainder of the approval period. Please contact either Nick Valentine or Anthony Yeates should you wish to discuss any matter related to the project:

**Nick Valentine**

Project Director, APP Corporation

**Email:** [nick.valentine@app.com.au](mailto:nick.valentine@app.com.au) **Phone:** 02 9963 9924

**Anthony Yeates**

Development Manager, RATCH Australia Corporation Limited

**Email:** [Anthony.Yeates@ratcaustralia.com](mailto:Anthony.Yeates@ratcaustralia.com) **Phone:** 02 9464 1382